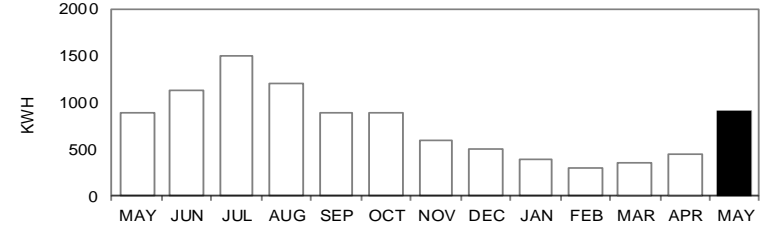




Calculating Your GRU Residential Electric Bill

① Electric Service Details Example										
Meter Number	METER READING DATES		Meter Read Type	Days of Service	METER READINGS		Meter Multiplier	Electric Consumption	Peak Demand	Next Meter Read on or About
E112233	4/14/2020	5/15/2020	ACTUAL	31	② 73670	③ 74573	④ 1.00000	903 kWh	N/A	6/16/2020

⑤ Description	Usage	Rate	Amount
① ELECTRIC CUSTOMER CHARGE			\$ 15.00
② ENERGY USE, TIER 1 (1 – 850 kWh)	850	\$ 0.0745	\$ 63.33
③ ENERGY USE, TIER 2 (OVER 850 kWh)	53	\$ 0.0987	\$ 5.23
④ ELECTRIC FUEL ADJUSTMENT	903	\$ 0.0350	\$ 31.61
⑤ FLORIDA GROSS RECEIPTS TAX			\$ 2.95
⑥ GAINESVILLE ELEC UTIL TAX			\$ 8.65
Total for Electric Services			\$ 126.77



ELECTRIC RATES
(Effective October 1, 2020)

Customer Charge..... \$ 15.00/month
 Energy Use, first 850 kWh..... \$ 0.0745/kWh
 Energy Use, over 850 kWh \$ 0.0987/kWh
 Fuel Adjustment, per kWh..... \$ (varies)

Rates are subject to a 2.5% Florida Gross Receipts Tax and either a 10% Utility Tax for customers inside Gainesville or both a 10% Electric Surcharge and a 10% County Utility Tax for customers outside the city.

Determining Your Consumption

GRU reads your electric meter monthly. The reading is in kilowatt-hours (kWh) and is listed in the Electric Service Details ① section on the back of your bill. Subtract last month's reading (Previous ②) from this month's reading (Present ③), then multiply the difference by the

Meter Multiplier ④ (for most residential meters, this will be a 1 or 10). This result is then multiplied by the Calculation Factor (for most residential customers, this will be 1) to get the usage.

$$\begin{array}{r}
 \text{Present reading:} \quad 74573 \text{ kWh} \\
 \text{Previous reading:} \quad \underline{73670 \text{ kWh}} \\
 \text{difference:} \quad \quad \quad 903 \text{ kWh} \\
 \text{Meter multiplier:} \quad \quad \underline{\times 1.0} \\
 \quad \quad \quad \quad \quad \quad 903 \text{ kWh} \\
 \text{Calculation factor:} \quad \underline{\times 1.0} \\
 \text{Consumption:} \quad \quad \quad 903 \text{ kWh}
 \end{array}$$

On the back of the bill, the electric use is shown in kWh and is listed for each tier in the Description section ⑤.

Calculating the Charges

The following example shows how charges are calculated for electric usage.

Steps 1 through 5 apply to all customers

- ① — **ELECTRIC CUSTOMER CHARGE**
This is a fixed charge to recover those costs that GRU must incur to provide service whether or not any electricity is used.

Monthly **\$ 15.00**
- ② — **ENERGY USE, TIER 1 (1 - 850 kWh)**
The charge for the first 850 kWh is \$0.0745/kWh.

850 kWh x \$0.0745/kWh = **\$ 63.33**
- ③ — **ENERGY USE, TIER 2 (OVER 850 kWh)**
The charge for all electricity used over 850 kWh is \$0.0987/kWh

903 kWh - 850 kWh = 53 kWh

53 kWh x \$0.0987/kWh = **\$ 5.23**

4 — ELECTRIC FUEL ADJUSTMENT

This charge is the electric consumption multiplied by the fuel adjustment rate. Fuel adjustments for electric, natural gas and liquid propane are used to recover fuel costs. GRU makes no profit on fuel and the fuel portion is exempt from utility tax. A typical value is used for this example.

903 kWh x \$0.035/kWh = **\$ 31.61**

5 — FLORIDA GROSS RECEIPTS TAX

This is a "cost recovery" for the State of Florida's 2.5% tax on GRU's non-tax revenues received for electric energy. Since this is a "cost recovery" and not a tax, it too is subject to the 2.5% cost recovery. The sum of Steps 1 through 4 is multiplied by a factor that determines the proper amount of the cost recovery.

\$15.00 + 63.33 + 5.23 + 31.61 = \$115.17

\$115.17 x 0.025641 = **\$ 2.95**

Step 6 only applies to customers living inside the city

6 — GAINESVILLE ELECTRIC UTILITY TAX

The sum of steps 1, 2, 3, and 5 is subject to a 10% Gainesville Electric Utility Tax for customers living within the city.

\$15.00 + 63.33 + 5.23 + 2.95 = \$86.51

\$86.51 x 0.10 = **\$ 8.65**

Electric Service Details Example - For Those Living Outside the City Limits			
Description	Usage	Rate	Amount
1 ELECTRIC CUSTOMER CHARGE			15.00
2 ENERGY USE, TIER 1 (1 – 850 kWh)	850	\$ 0.0745	63.33
3 ENERGY USE, TIER 2 (OVER 850 kWh)	53	\$ 0.0987	5.23
4 ELECTRIC FUEL ADJUSTMENT	903	\$ 0.0350	31.61
7 ELECTRIC SURCHARGE			8.65
5 + 8 FLORIDA GROSS RECEIPTS TAX			3.17
9 COUNTY ELEC UTIL TAX			9.54
Total for Electric Services			136.53

Steps 7, 8, & 9 only apply to customers living outside the city*

7 — ELECTRIC SURCHARGE

The sum of steps 1, 2, 3, and 5 is subject to a 10% Electric Surcharge for customers living outside the city.

\$15.00 + 63.33 + 5.23 + 2.95 = \$86.51

\$86.51 x 0.10 = **\$ 8.65**

8 — Additional FLORIDA GROSS RECEIPTS TAX

The Florida Gross Receipts Tax cost recovery applies to the Electric Surcharge.

\$8.65 x 0.025641 = **\$0.22**

This amount is added to the Florida Gross Receipts Tax from step 6.

9 — COUNTY UTILITY TAX

The sum of steps 1, 2, 3, 5, 7, and 8 is subject to a 10% County Utility Tax for customers living outside the city.

\$15.00 + 63.33 + 5.23 + 2.95 + 8.65 + 0.22 = \$95.47

\$95.38 x 0.10 = **\$ 9.54**

* Some residential customers may be subject to local city franchise fees in addition to utility surcharges and taxes. If you have questions about franchise fees on your bill, please contact your local taxing municipality for more information.

NOTE: This fact sheet is meant as an aid to understanding GRU's residential electric rates. It does not replace GRU's rates in the Gainesville Code of Ordinances. If there are differences between this material and the ordinance, the ordinance shall prevail. Different rates and methods of calculation apply for our non-residential electric customers. For more information on calculating rates, call GRU's Customer Service, 352-334-3434.
Rev. 10/20 AC